



# COMMONWEALTH of VIRGINIA

## DEPARTMENT OF TRANSPORTATION

Stephen C. Brich, P.E.  
Commissioner

1401 East Broad Street  
Richmond, Virginia 23219

(804) 786-2701  
Fax: (804) 786-2940

February 13, 2023

### ADDENDUM NO. 1 TO ALL BIDDERS:

Reference – Invitation for Bid: 157389  
Petersburg & South Hill Residency-Restroom  
Renovations  
Commodity: Construction Services  
Dated: December 12, 2022  
For Delivery To: Commonwealth of Virginia  
Virginia Department of Transportation (VDOT)  
Attention: Mr. Joseph Patterson  
Bids Due: **February 21, 2023** (2:00 PM)

The above hereby is changed to read:

1. This Addendum includes Addendum #1 sealed by Stephanie B. Stein, project site visits, specification revisions, drawing revisions, and attachments.
2. In reference to IFB due date, change Bids Due Date to: **February 23, 2023** at 2:00 PM
3. In reference to IFB bid opening date, change Bid Opening Date to: **February 24, 2022** at 2:00 PM

Sincerely,  
*Joseph Patterson*  
Joseph Patterson  
Senior Procurement Officer  
Phone: 804-729-6709

Note: Acknowledgement of this addendum or any subsequent addenda must be prior to the bid due date and time or signed and uploaded as an attachment with the electronic bid submission. Failure to acknowledge or submit the addendum may be grounds for declaring the bid non-responsive. Acknowledgement of this addendum or any subsequent addenda on the mandatory reminders tab signifies acceptance and your electronic signature.



G A U T H I E R  
A L V A R A D O  
A S S O C I A T E S



## ADDENDUM NO. 01

**DATE:** February 10, 2023

**RE:** Virginia Department of Transportation  
Petersburg & South Hill Residency – Restroom Renovations  
Project Code: 501-B2501-012  
Information for Bid (IFB) Number: 157389

This addendum herein supplements, modifies, changes, deletes from or adds to the original bidding documents for the project listed above and is herein made part of the contract documents.

Drawings and General Provisions of the Contract, including General and Supplementary Conditions, shall apply to items incorporated in the Addendum.

This Addendum consists of 1 page with 4 pages of attachments.

### PROJECT SITE VISITS:

Site visits to one or both project sites can be arranged prior to the bid due date with a minimum 48-hour notice. Please contact Josh Andelin by phone at 757-561-4509 or by email at [josh.andelin@vdot.virginia.gov](mailto:josh.andelin@vdot.virginia.gov) to arrange a site visit if desired.

### SPECIFICATION REVISIONS:

1. **ADD:** Page 1 of Specification Section 014000 – QUALITY REQUIREMENTS (attached)
2. **ADD:** Page 1 of Specification Section 017823 – OPERATION AND MAINTENANCE DATA (attached)

### DRAWING REVISIONS:

1. **REPLACE DRAWING SHEET A104:** Detail 4 on Drawing Sheet A104 has been revised (attached).
2. **REPLACE DRAWING SHEET A108:** Detail 3 on Drawing Sheet A108 has been revised (attached).

### ATTACHMENTS:

1. Page 1 of Specification Section 014000 – QUALITY REQUIREMENTS
2. Page 1 of Specification Section 017823 – OPERATION AND MAINTENANCE DATA
3. Drawing Sheet A104
4. Drawing Sheet A108

END OF ADDENDUM NO. 01

SECTION 014000 - QUALITY REQUIREMENTS

PART 1 - GENERAL

1.1 RELATED DOCUMENTS

- A. Drawings and general provisions of the Contract, including General and Supplementary Conditions and other Division 01 Specification Sections, apply to this Section.

1.2 DEFINITIONS

- A. Quality-Assurance Services: Activities, actions, and procedures performed before and during execution of the Work to guard against defects and deficiencies and substantiate that proposed construction will comply with requirements.
- B. Quality-Control Services: Tests, inspections, procedures, and related actions during and after execution of the Work to evaluate that actual products incorporated into the Work and completed construction comply with requirements. Services do not include contract enforcement activities performed by Architect.
- C. Installer/Applicator/Erector: Contractor or another entity engaged by Contractor as an employee, Subcontractor, or Sub-subcontractor, to perform a particular construction operation, including installation, erection, application, and similar operations.

1.3 CONFLICTING REQUIREMENTS

- A. General: If compliance with two or more standards is specified and the standards establish different or conflicting requirements for minimum quantities or quality levels, comply with the most stringent requirement.
- B. Minimum Quantity or Quality Levels: The quantity or quality level shown or specified shall be the minimum provided or performed. The actual installation may comply exactly with the minimum quantity or quality specified, or it may exceed the minimum within reasonable limits.

1.4 QUALITY ASSURANCE

- A. General: Qualifications paragraphs in this Article establish the minimum qualification levels required; individual Specification Sections specify additional requirements.
- B. Installer Qualifications: A firm or individual experienced in installing, erecting, or assembling work similar in material, design, and extent to that indicated for this Project,

SECTION 017823 - OPERATION AND MAINTENANCE DATA

PART 1 - GENERAL

1.1 RELATED DOCUMENTS

- A. Drawings and general provisions of the Contract, including General and Supplementary Conditions and other Division 01 Specification Sections, apply to this Section.

1.2 SUBMITTALS

- A. Initial Submittal: Submit 1 draft copy of each manual at least 15 days before requesting inspection for Substantial Completion. Include a complete operation and maintenance directory.
  - 1. Final Submittal: Submit three copies of each manual in final form to Owner within 30 days of substantial completion.

1.3 COORDINATION

- A. Where operation and maintenance documentation includes information on installations by more than one factory-authorized service representative, assemble and coordinate information furnished by representatives and prepare manuals.

PART 2 - PRODUCTS

2.1 MANUALS, GENERAL

- A. Organization: Unless otherwise indicated, organize each manual into a separate section for each system and subsystem, and a separate section for each piece of equipment not part of a system. Each manual shall contain the following materials, in the order listed:
  - 1. Title page.
  - 2. Table of contents.
  - 3. Manual contents.
- B. Manual Contents: Organize into sets of manageable size. Arrange contents alphabetically by system, subsystem, and equipment. If possible, assemble instructions for subsystems, equipment, and components of one system into a single binder.



GAUTHIER  
ALVARADO  
ASSOCIATES

703-241-2202  
WWW.GAA-AE.COM

PROJECT TITLE

VIRGINIA DEPARTMENT OF  
TRANSPORTATION

State Project No.  
501-B2501-012

PETERSBURG &  
SOUTH HILL  
RESIDENCY  
RESTROOM  
RENOVATIONS



REVISIONS

NO.	DATE	DESCRIPTION
1	02-10-23	ADDENDUM NO. 1

GAA PROJECT NO. 768-E1

DRAWN BY SS

CHECKED BY JH

DATE 12-12-2022

DRAWING TITLE

ARCHITECTURAL  
PETERSBURG RESIDENCY  
DETAILS

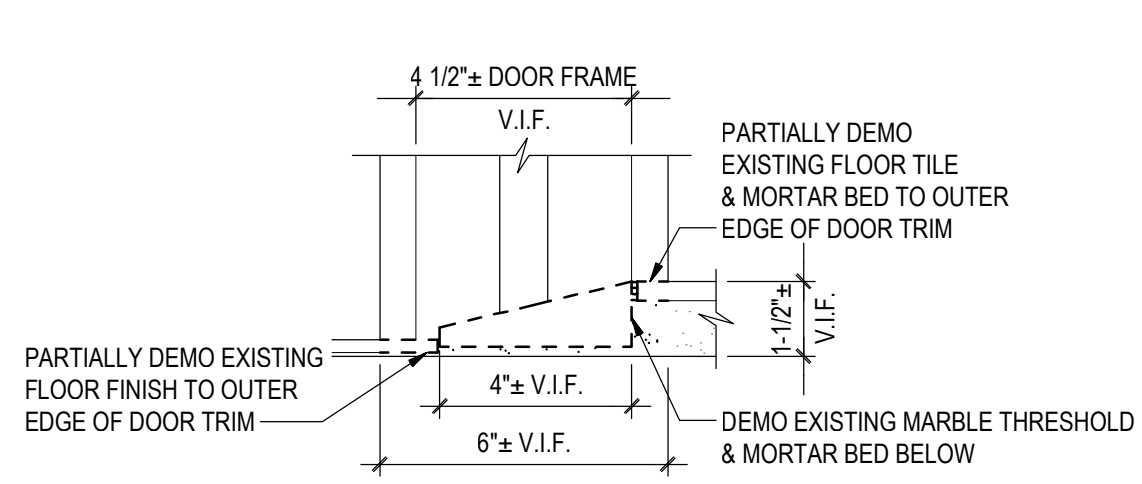
PROJECT STATUS

PERMIT SUBMISSION

DRAWING NUMBER

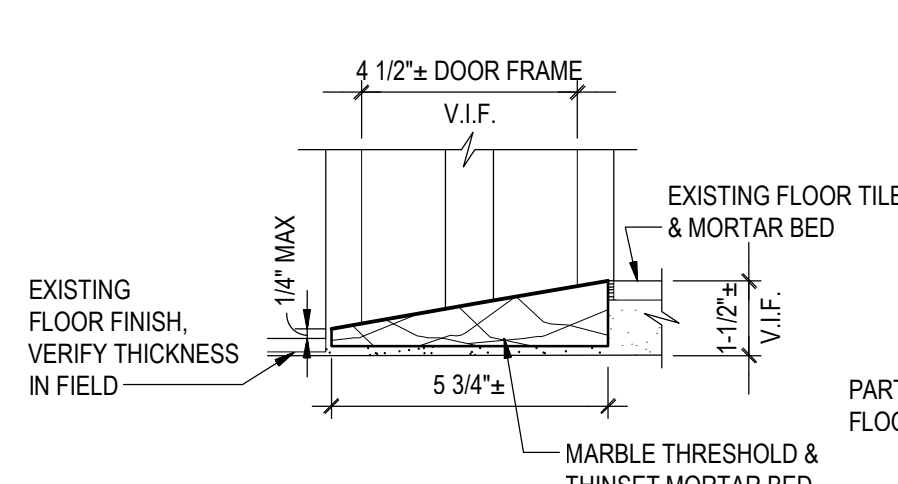
**A104**

IFB # 157389



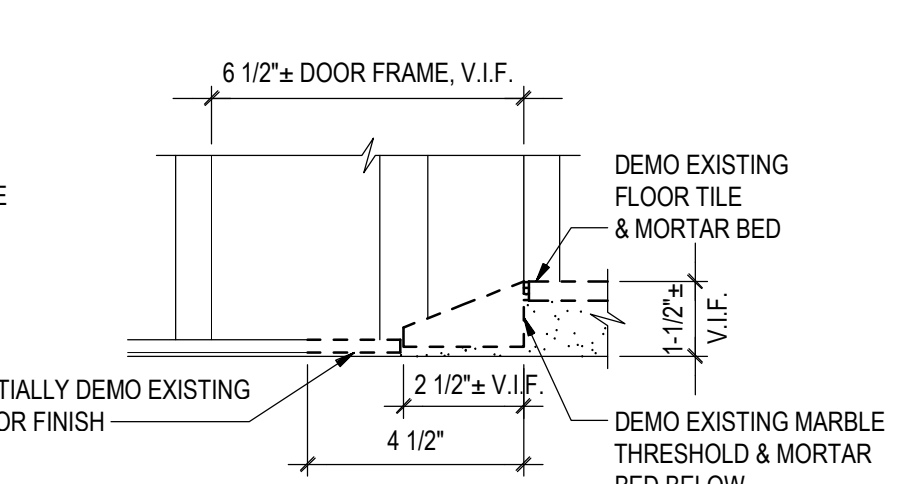
EXISTING WOMAN'S RESTROOM

1 THRESHOLD DEMO DETAIL  
3" = 1'-0"



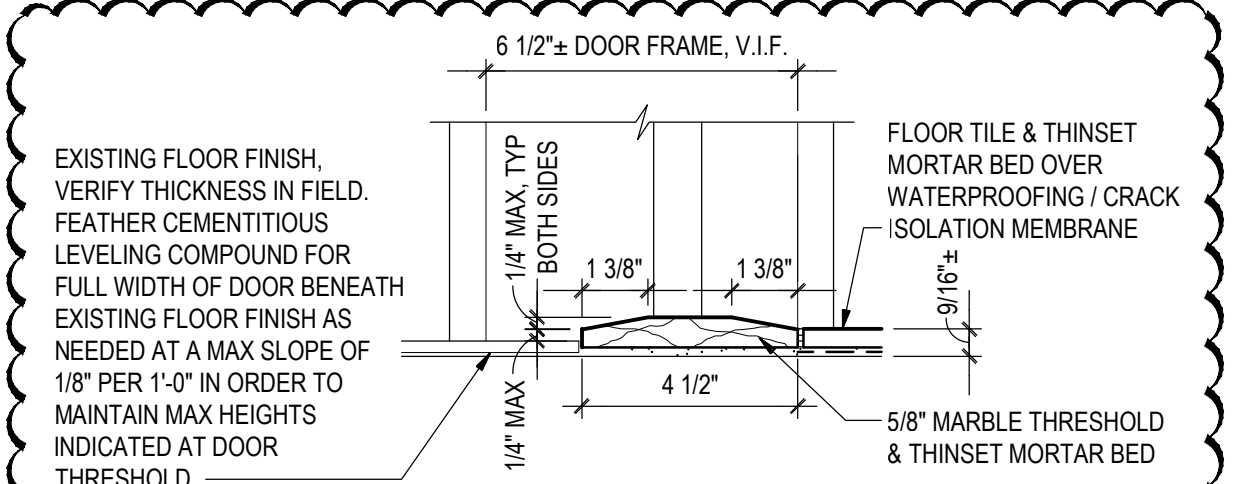
UNISEX RESTROOM 118

2 THRESHOLD NO. 1 DETAIL  
3" = 1'-0"



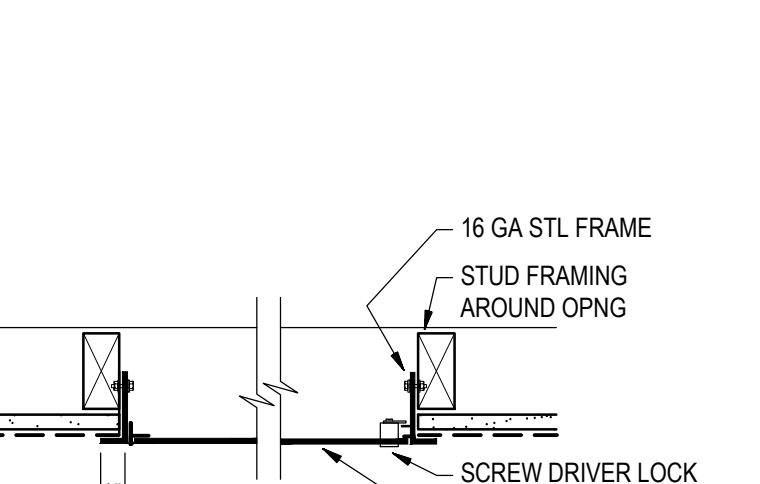
EXISTING MEN'S RESTROOM

3 THRESHOLD DEMO DETAIL  
3" = 1'-0"

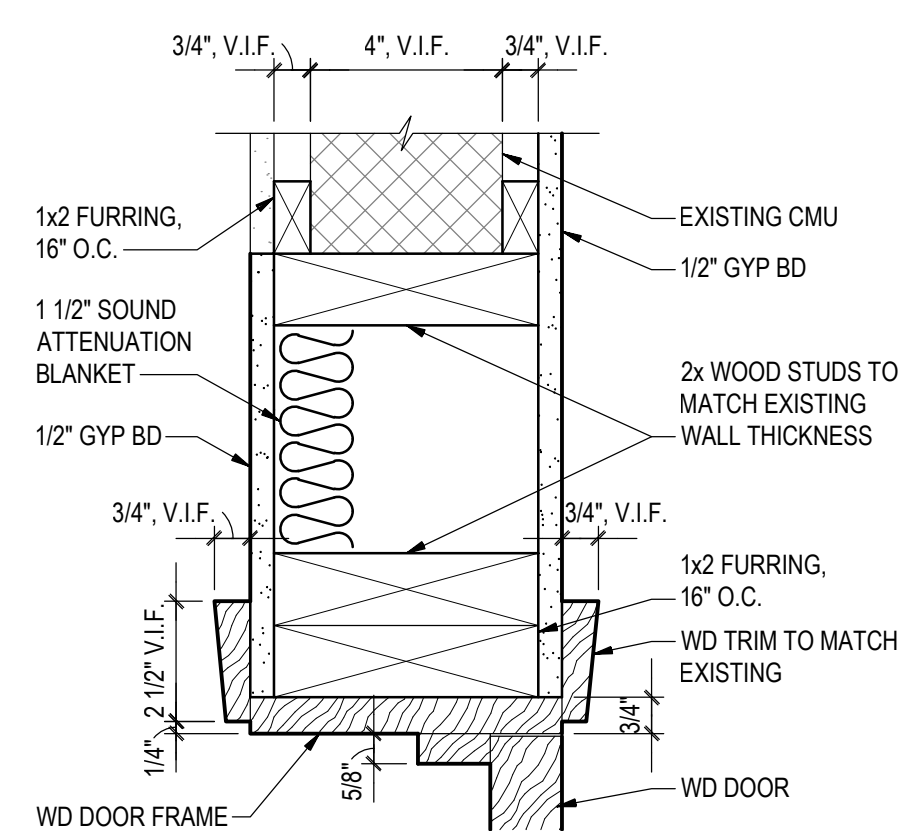


UNISEX RESTROOM 117

4 THRESHOLD NO. 2 DETAIL  
3" = 1'-0"

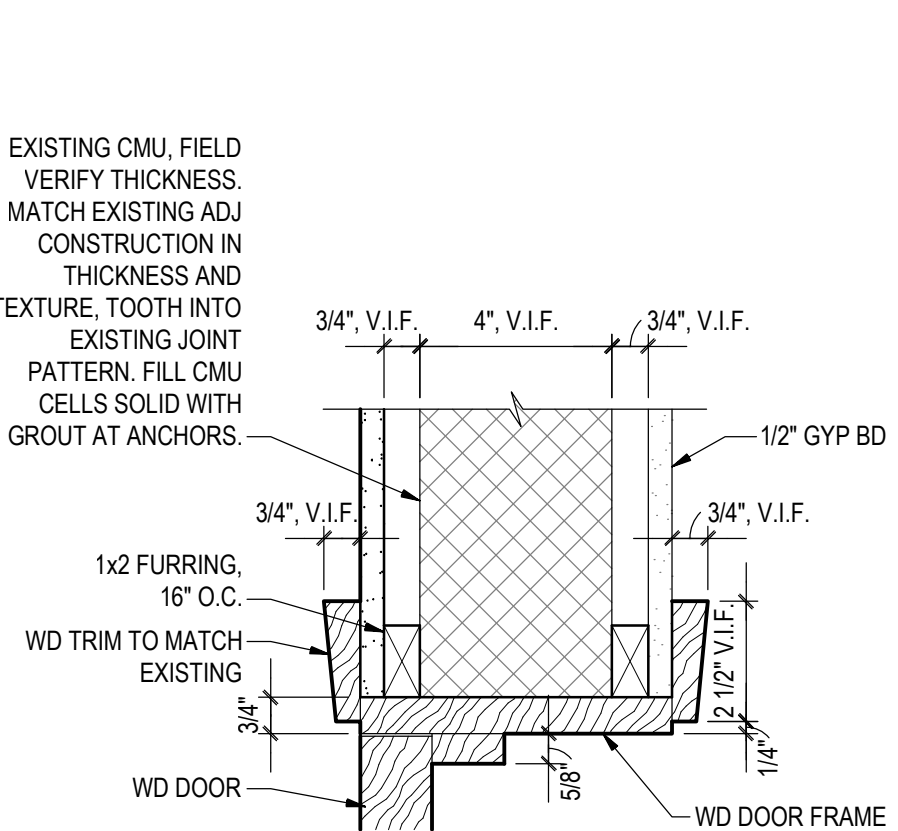


5 WALL ACCESS PANEL DETAIL  
1-1/2" = 1'-0"



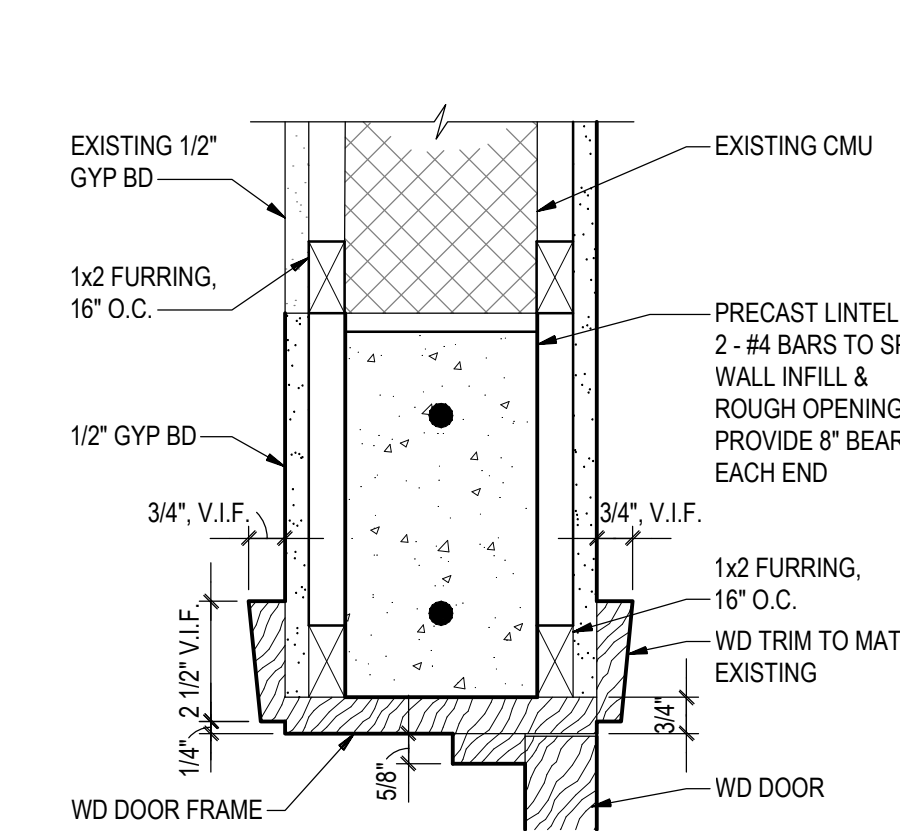
UNISEX RESTROOM 117

6 JAMB DETAIL AT WALL INFILL  
3" = 1'-0"



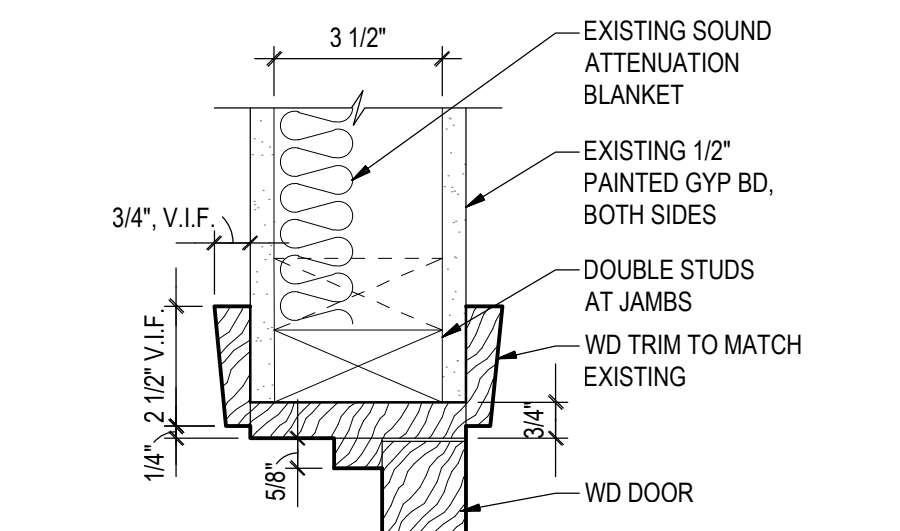
UNISEX RESTROOM 117

7 JAMB DETAIL AT EXISTING WALL  
3" = 1'-0"



UNISEX RESTROOM 117

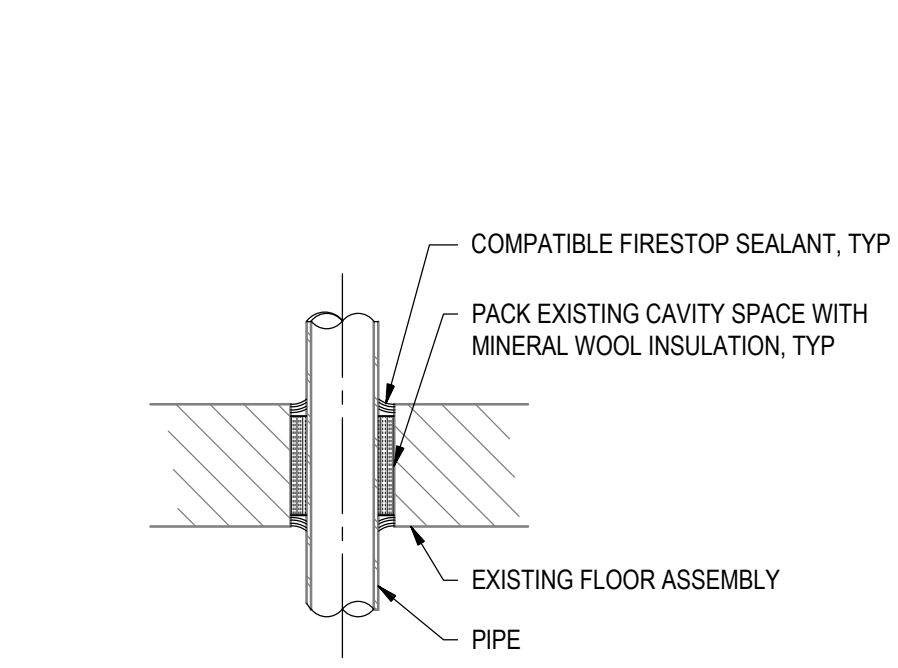
8 HEAD DETAIL  
3" = 1'-0"



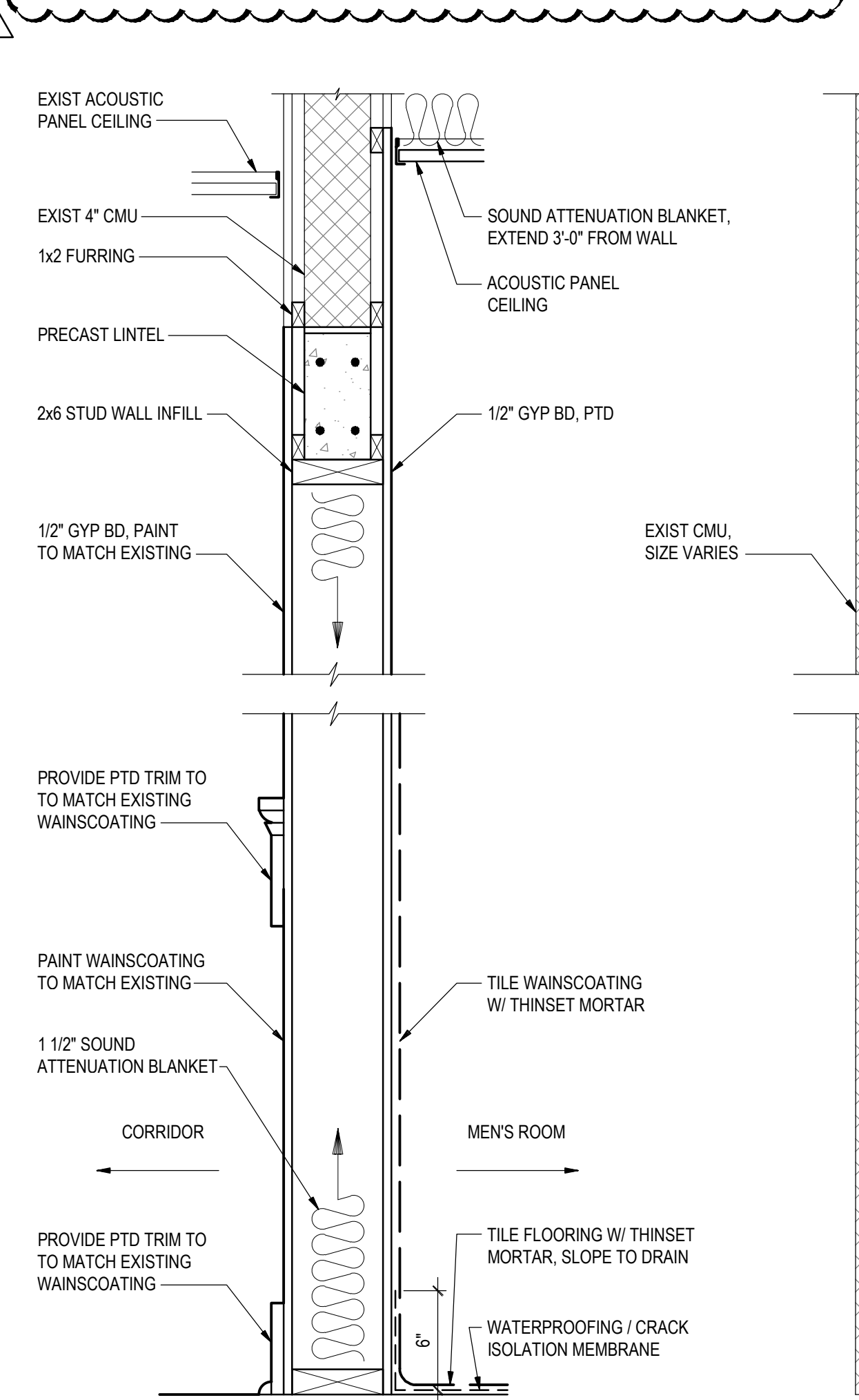
UNISEX RESTROOM 118

9 EXISTING HEAD DETAIL  
3" = 1'-0"

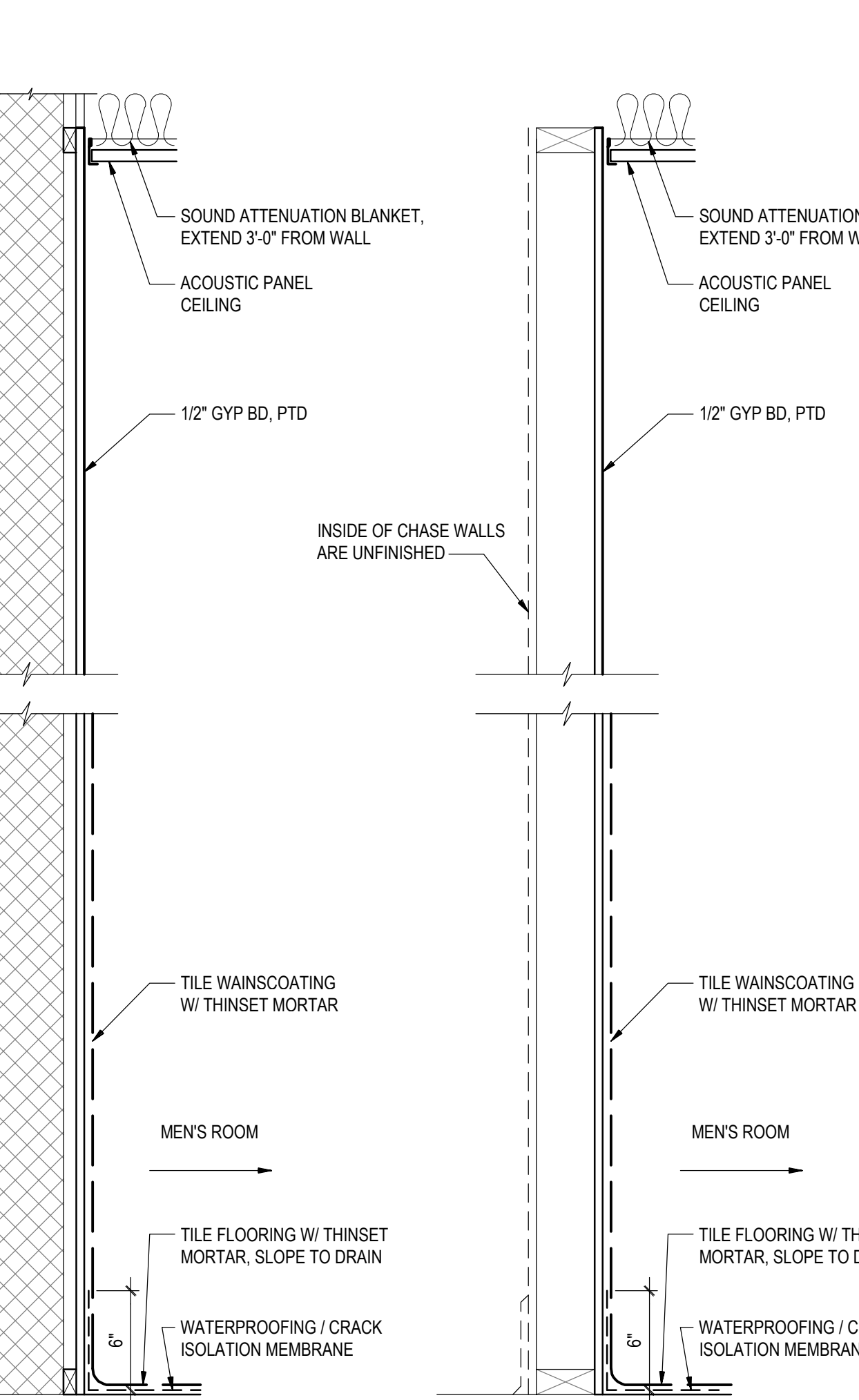
\*EXISTING JAMBS SIMILAR (DOUBLE STUDS AT ALL JAMBS)



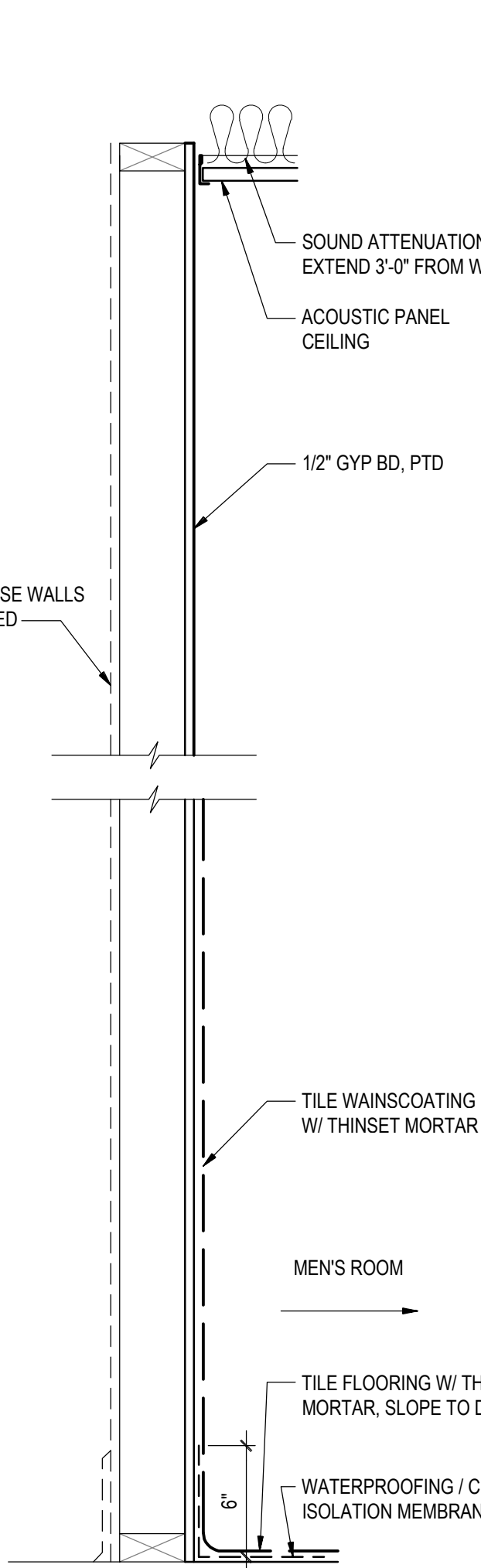
10 THROUGH-PENETRATION FIRESTOP DETAIL AT FLOOR  
1" = 1'-0"



1 2x6 STUD WALL INFILL



2 EXIST CMU WALL

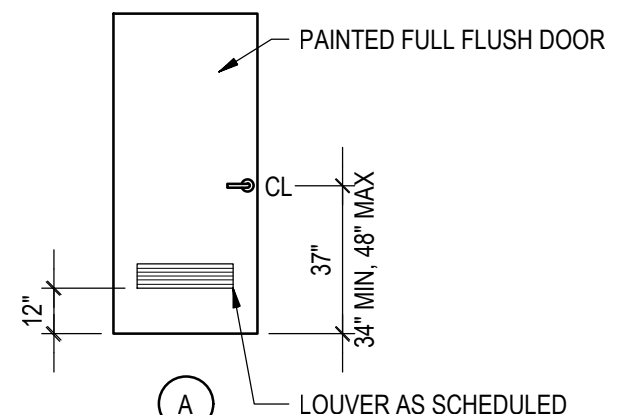


3 EXIST 2x4 STUDS

11 PARTITION TYPES  
1-1/2" = 1'-0"

DOOR SCHEDULE												
DOOR NO	SPACE NO	SIZE	DOOR TYPE	DOOR MATL	FRAME MATL	JAMB DET	HEAD DET	LABEL	HDW SET NO	THR DET	LOUVER	REMARKS
1	118	3'-0"x6'-8"	A	WD	WD	9	9	-	1	2	24"x4"	*MATCH EXISTING LOUVER SIZE, VERIFY IN FIELD
2	117	3'-0"x6'-8"	A	WD	WD	6/7	8	-	1	4	24"x6"	*MATCH EXISTING LOUVER SIZE, VERIFY IN FIELD

- DOOR SCHEDULE NOTES**
- ALL DOORS ARE 1-3/4" THICK UNLESS OTHERWISE NOTED.
  - UNDERCUT ALL DOORS TO CLEAR FLOOR FINISHES AND TO CLEAR THRESHOLD BY 1/2" AT TOILET ROOMS, UNLESS OTHERWISE NOTED.
  - DOOR HARDWARE FINISH TO MATCH EXISTING



DOOR TYPE

**HARDWARE SET NO. 1**

- 3 HINGES
- 1 PRIVACY LOCKSET WITH INDICATOR
- 1 SURFACE MOUNTED CLOSER
- 1 WALL MOUNTED DOOR STOP
- 3 SILENCERS
- 1 KICKPLATE

DATE: 02/10/23  
TIME: 10:23:03  
FILE: 1901-A104  
SCALE: 1/16"

UL Product iQ®

## XHEZ.F-E-1001 - Through-penetration Firestop Systems

Design/System/Construction/Assembly Usage Disclaimer

- Authorities Having Jurisdiction should be consulted in all cases as to the particular requirements covering the installation and use of UL Certified products, equipment, system, devices, and materials.
- Authorities Having Jurisdiction should be consulted before construction.
- Fire resistance assemblies and products are developed by the design submitter and have been investigated by UL for compliance with applicable requirements. The published information cannot always address every construction nuance encountered in the field.
- When field issues arise, it is recommended the first contact for assistance be the technical service staff provided by the product manufacturer noted for the design. Users of fire resistance assemblies are advised to consult the general Guide Information for each product category and each group of assemblies. The Guide Information includes specifics concerning alternate materials and alternate methods of construction.
- Only products which bear UL's Mark are considered Certified.

### XHEZ - Through-penetration Firestop Systems

See General Information for Through-penetration Firestop Systems

#### System No. F-E-1001

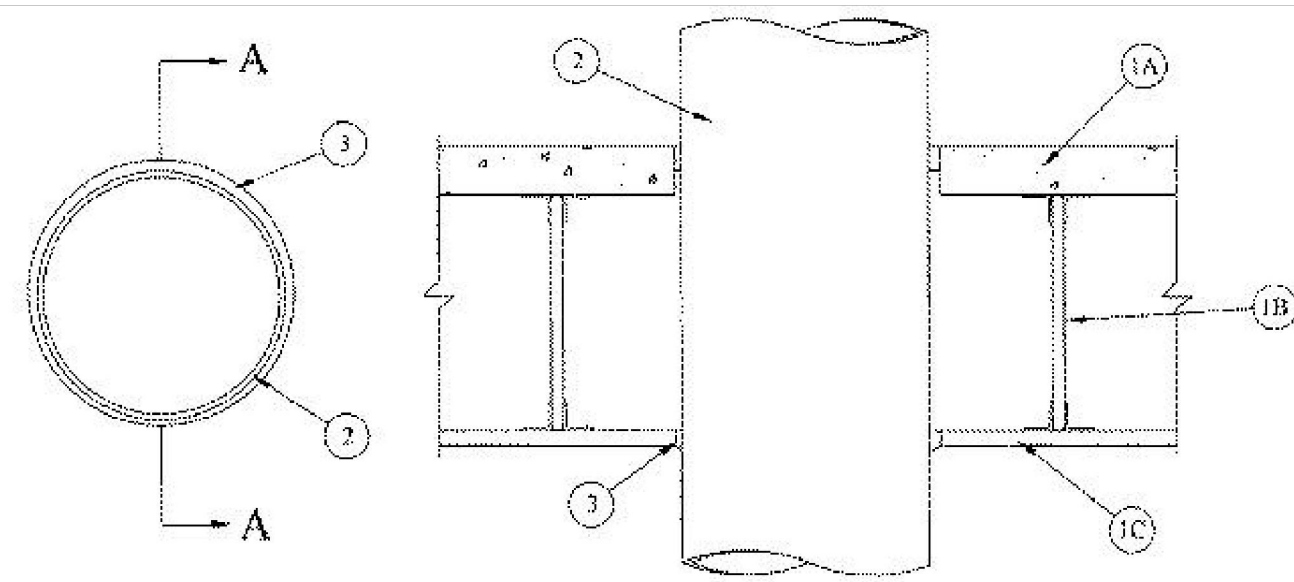
March 23, 2012

**F Rating — 1 Hr**

**T Rating — 1 Hr**

**L Rating At Ambient — Less Than 1 CFM/Sq Ft (See Item 3)**

**L Rating At 400°F — Less Than 1 CFM/Sq Ft (See Item 3)**



SECTION A-A

**1. Floor-Ceiling Assembly** — The 1 hr fire rated concrete and steel joist Floor-Ceiling assembly shall be constructed of the materials and in the manner described in the individual G500 Series Design in the UL Fire Resistance Directory, as summarized below:

**A. Flooring** — Normal or Lightweight or normal weight (100-150 pcf or 1600-2400 kg/m<sup>3</sup>) concrete as specified in the individual G500 Series Design. Max diam of opening is 11-1/4 in. (286 mm).

**B. Joists** — Steel joists or **Structural Steel Members\*** as specified in the individual G500 Series Design.

**C. Gypsum Board\*** — Min 5/8 in. (16 mm) thick, screw-attached to furring channels as specified in the individual G500 Series Design. Max diam of opening is 11-1/4 in. (286 mm).

**2. Through Penetrant** — One metallic pipe, conduit or tubing to be installed either concentrically or eccentrically within the opening, approx midway between joists. The annular space between penetrant and periphery of opening shall be min 1/4 in. (6 mm) to max 1/2 in. (13 mm). Penetrant to be rigidly supported on both sides of floor assembly. The following types and sizes of metallic pipe, conduit or tubing may be used:

**A. Steel Pipe** — Nom 10 in. (254 mm) diam (or smaller) Schedule 10 (or heavier) steel pipe.

**B. Iron Pipe** — Nom 10 in. (254 mm) diam (or smaller) cast or ductile iron pipe.

**C. Conduit** — Nom 6 in. (152 mm) diam (or smaller) steel conduit, or nom 4 in. (102 mm) diam (or smaller) electrical metallic tubing.

**D. Copper Tubing** — Nom 3 in. (76 mm) diam (or smaller) Type L (or heavier) copper tube.

**E. Copper Pipe** — Nom 3 in. (76 mm) diam (or smaller) Regular (or heavier) copper pipe.

**3. Fill, Void or Cavity Materials\* — Caulk or Sealant** — Min 3/4 in. (19 mm) thickness of fill material applied within the annulus, flush with top surface of floor. Min 5/8 in. (16 mm) thickness of fill material applied within the annulus, flush with bottom surface of ceiling. An additional min 1/4 in. (6 mm) crown of fill material applied to perimeter of penetrant at its egress from the underside of ceiling.

**3M COMPANY** — CP-25 WB+ Caulk, IC-15 WB+ Caulk or FB-3000 WT Sealant

(Note - L Rating applies only when CP 25 WB+ Caulk or FB-3000 WT Sealant is used.)

\* Indicates such products shall bear the UL or cUL Certification Mark for jurisdictions employing the UL or cUL Certification (such as Canada), respectively.

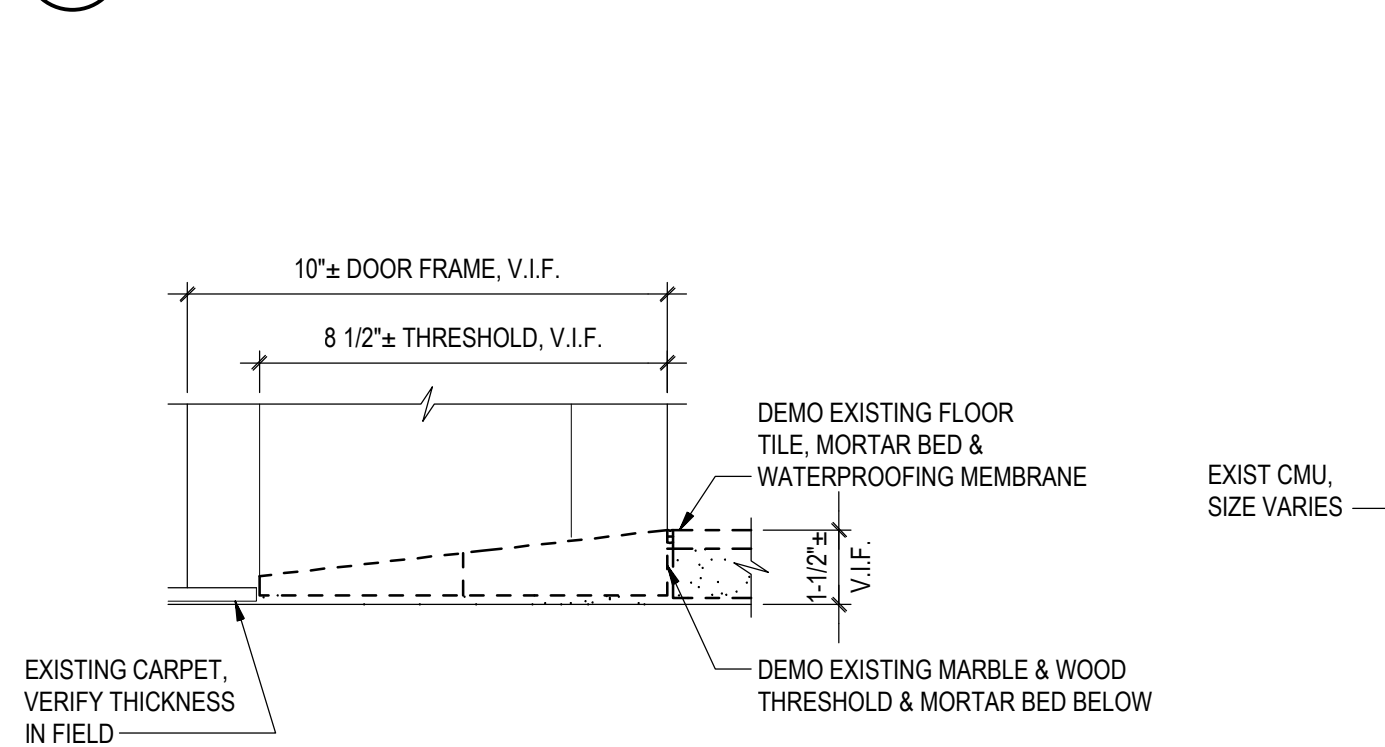
Last Updated on 2012-03-23

The appearance of a company's name or product in this database does not in itself assure that products so identified have been manufactured under UL's Follow-Up Service. Only those products bearing the UL Mark should be considered to be Certified and covered under UL's Follow-Up Service. Always look for the Mark on the product.

UL permits the reproduction of the material contained in the Online Certification Directory subject to the following conditions: 1. The Guide Information, Assemblies, Constructions, Designs, Systems, and/or Certifications (files) must be presented in their entirety and in a non-misleading manner, without any manipulation of the data (or drawings). 2. The statement "Reprinted from the Online Certifications Directory with permission from UL" must appear adjacent to the extracted material. In addition, the reprinted material must include a copyright notice in the following format: "© 2022 UL LLC"

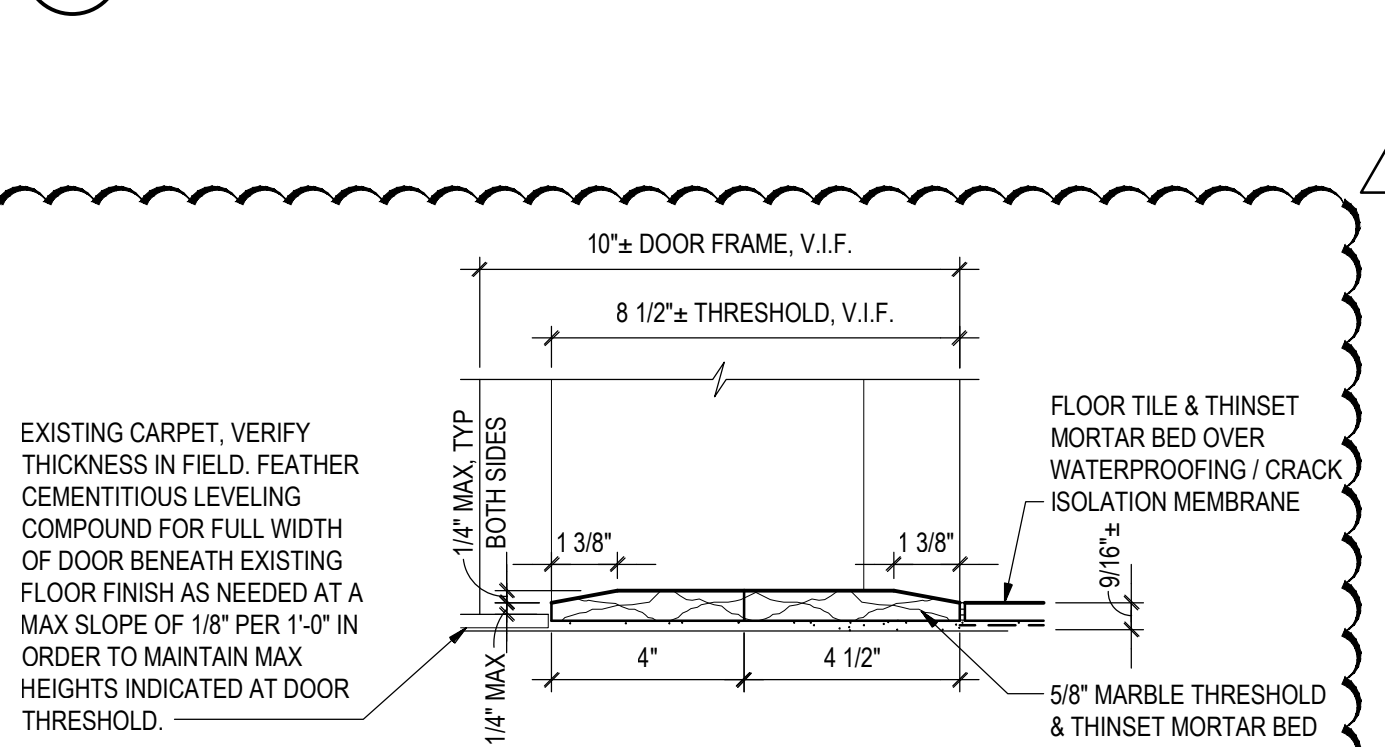
### 1 UL THROUGH-PENETRATION FIRESTOP SYSTEM DETAIL

A108 NTS



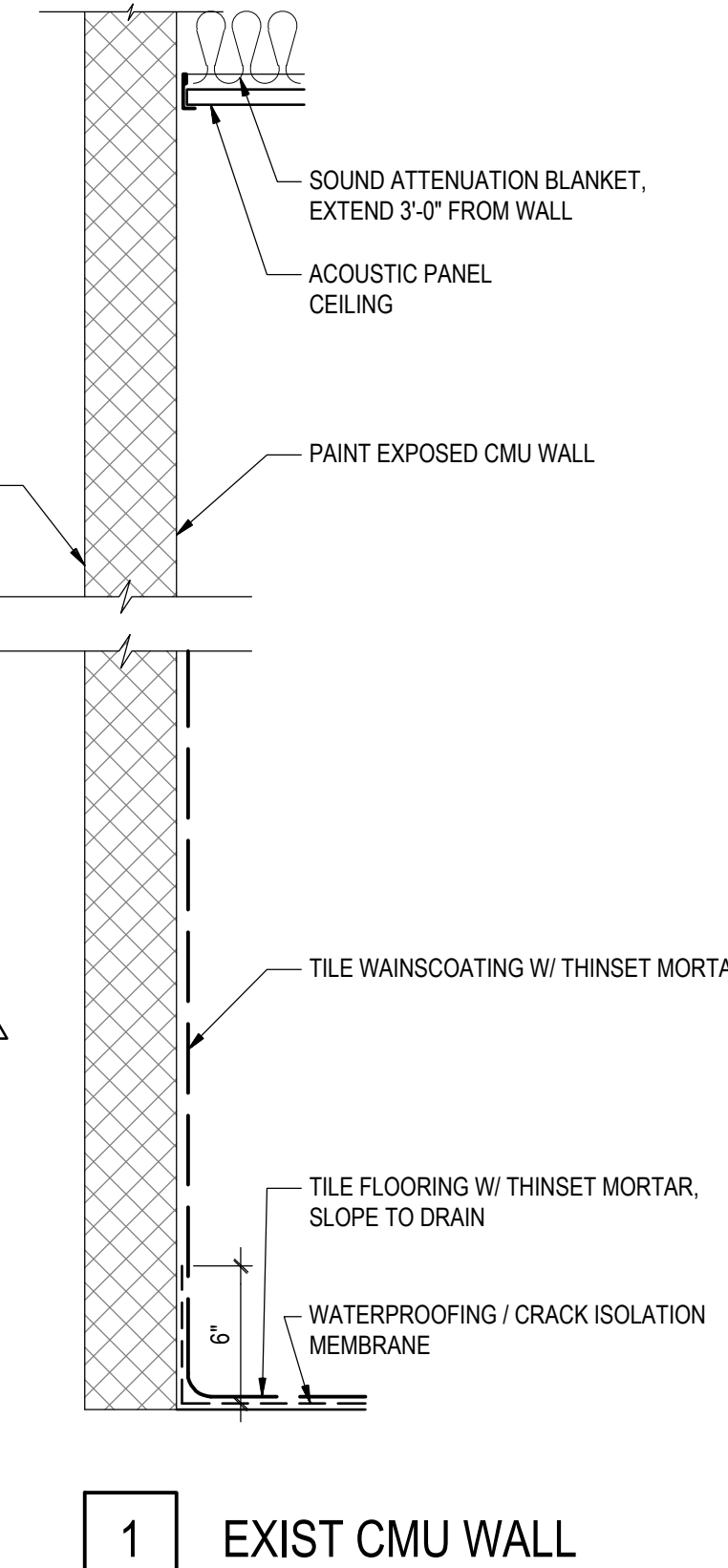
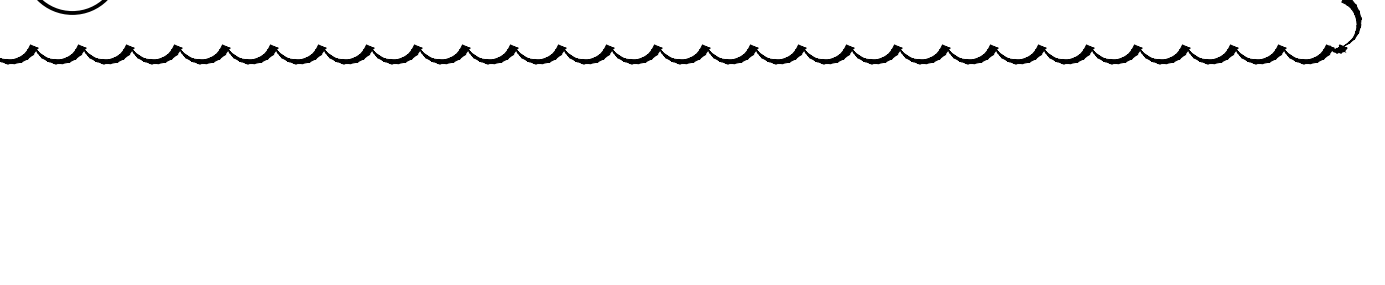
### 2 THRESHOLD DEMO DETAIL

A108 3" = 1'-0"



### 3 THRESHOLD NO. 1 DETAIL

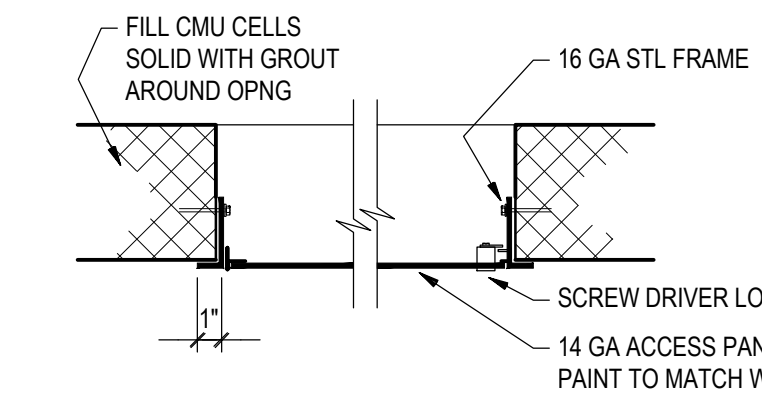
A108 3" = 1'-0"



1 EXIST CMU WALL

### 4 PARTITION TYPE

A108 1-1/2" = 1'-0"



### 5 WALL ACCESS PANEL DETAIL

A108 1-1/2" = 1'-0"



GAUTHER  
ALVARADO  
ASSOCIATES

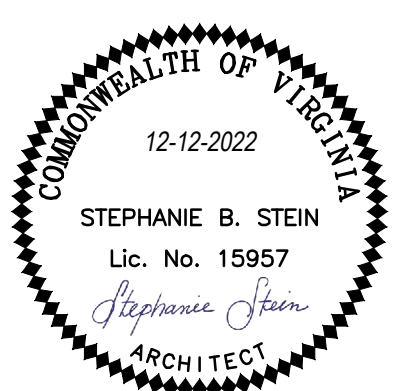
703-241-2202  
WWW.GAA-AE.COM

PROJECT TITLE

VIRGINIA DEPARTMENT OF  
TRANSPORTATION

State Project No.  
501-B2501-012

**PETERSBURG &  
SOUTH HILL  
RESIDENCY  
RESTROOM  
RENOVATIONS**



REVISIONS

NO.	DATE	DESCRIPTION
1	02-10-23	ADDENDUM NO. 1

GAA PROJECT NO. 768-E1  
DRAWN BY SS  
CHECKED BY JH  
DATE 12-12-2022

DRAWING TITLE

**ARCHITECTURAL  
SOUTH HILL RESIDENCY  
DETAILS**

PROJECT STATUS  
PERMIT SUBMISSION

DRAWING NUMBER

**A108**

IFB # 157389

DATE: 02/10/23  
TIME: 10:55  
FILE: 2001-A108  
SCALE: 1"=1'-0"